

A photograph of a Harvia sauna heater installed in the corner of a sauna. The heater is made of metal and filled with dark stones. It is surrounded by light-colored wooden slatted walls. In the foreground, there are wooden sauna benches. The floor is covered with light-colored square tiles. An orange curved line separates the top of the image from the rest of the page.

# SAUNA HEATERS PRODUCT CATALOGUE 2023

The Harvia logo consists of the word "HARVIA" in a bold, white, italicized sans-serif font, set against a solid red square background.

Sauna & Spa

# Content

<b>HEALING WITH HEAT</b>	<b>5</b>
<b>RESPONSIBILITY</b>	<b>6</b>
<b>ELECTRIC HEATERS</b>	<b>8</b>
<b>HEATERS FOR SMALL SAUNAS</b>	<b>10</b>
Delta, Delta XE, Delta Combi	10
Vega	11
Vega Compact	11
<b>HARVIA HEATERS FOR FAMILY AND PUBLIC SAUNAS</b>	<b>13</b>
The Wall	14
The Wall Combi	17
KIP	18
Top Steel	18
Moderna	19
Combinator	20
Topclass Combi	20
Hidden heater	21
Sauna steamer	21
Globe	23
Harvia Legend XE, XW WiFi, E	25
Legend Pro	27
Glow, Glow corner	29
Cilindro Plus Spot	31
Cilindro	32
Cilindro Pro	35
Virta	36
Forte	41
Senator	42
Senator Combi	43
Club	44
Club Combi	44
Club Pro	45
Modulo	47
Qube	49
<b>HARVIA CONTROL UNITS</b>	<b>50</b>
<b>HEATER OPTIONS</b>	<b>54</b>
<b>SAFETY EQUIPMENT AND SAFETY SWITCHES</b>	<b>56</b>
<b>SAUNA ACCESSORIES</b>	<b>58</b>
Harvia sauna heater stones	60
<b>TECHNICAL DATA</b>	<b>62</b>

## Relaxing Moments & Natural Wellbeing

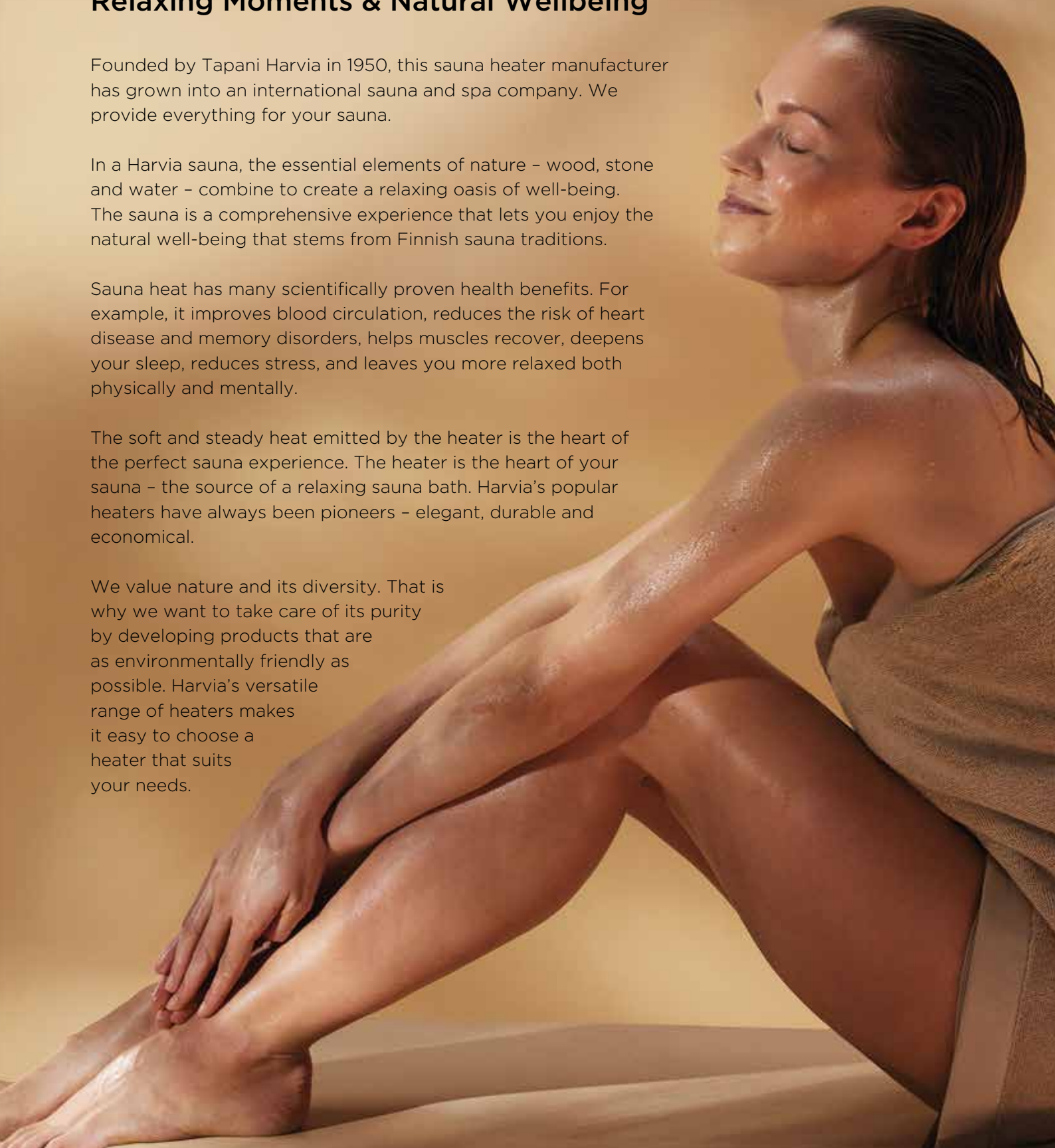
Founded by Tapani Harvia in 1950, this sauna heater manufacturer has grown into an international sauna and spa company. We provide everything for your sauna.

In a Harvia sauna, the essential elements of nature – wood, stone and water – combine to create a relaxing oasis of well-being. The sauna is a comprehensive experience that lets you enjoy the natural well-being that stems from Finnish sauna traditions.

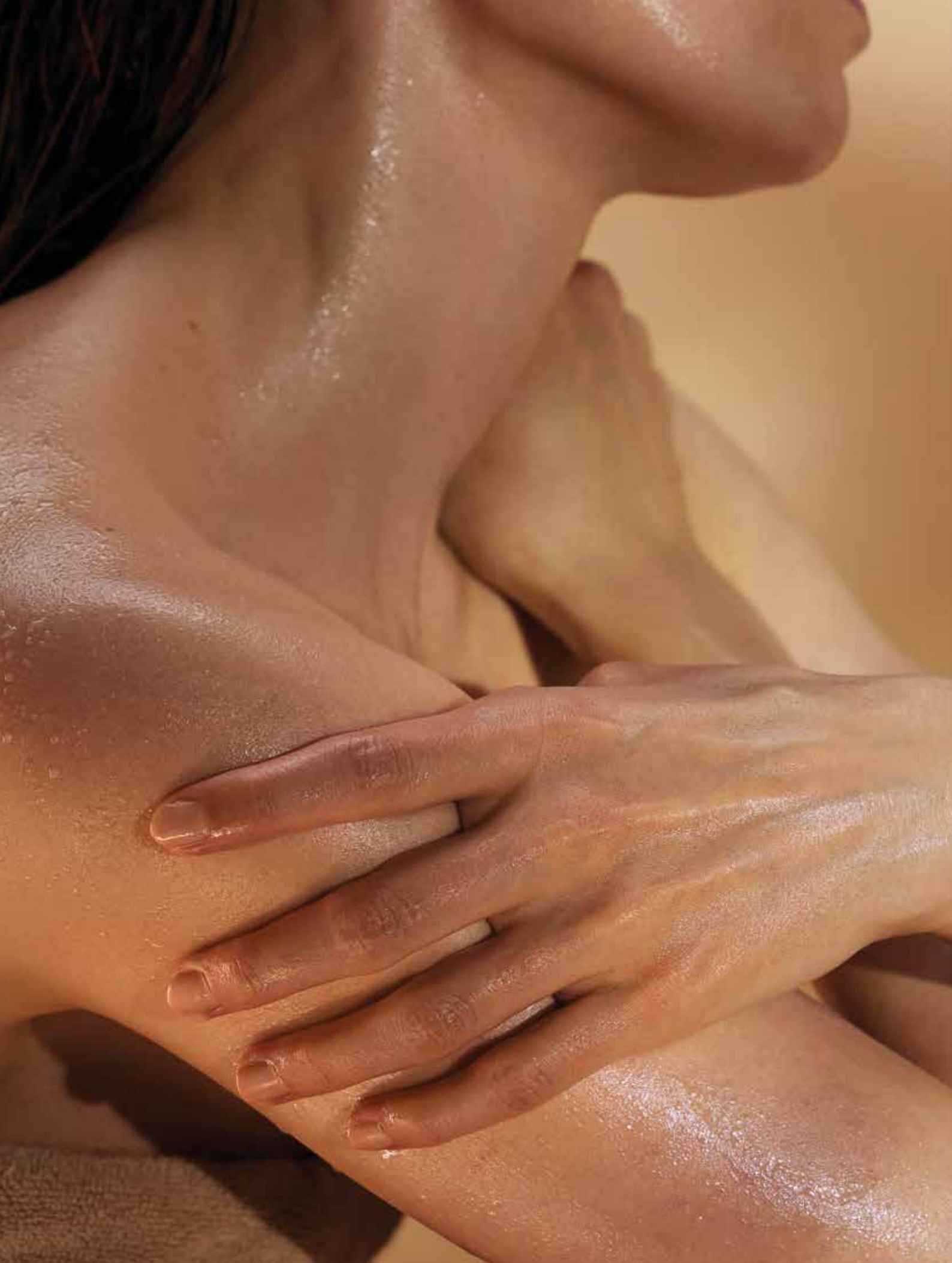
Sauna heat has many scientifically proven health benefits. For example, it improves blood circulation, reduces the risk of heart disease and memory disorders, helps muscles recover, deepens your sleep, reduces stress, and leaves you more relaxed both physically and mentally.

The soft and steady heat emitted by the heater is the heart of the perfect sauna experience. The heater is the heart of your sauna – the source of a relaxing sauna bath. Harvia's popular heaters have always been pioneers – elegant, durable and economical.

We value nature and its diversity. That is why we want to take care of its purity by developing products that are as environmentally friendly as possible. Harvia's versatile range of heaters makes it easy to choose a heater that suits your needs.







# HEALING WITH HEAT



## Sauna's heat is good for the heart

Taking 2–3 sauna baths per week is enough to lower the risk of cardiovascular disease by 20% compared to those sauna bathing only once a week. The risks may decrease by up to 65% the more one sauna bathes.

*Laukkanen, Khan, Zaccardi & Laukkanen 2015*



## Sauna bathing improves sleep quality

A study investigating the connection between sauna bathing and sleep saw a 70% increase in deep sleep during the first two hours and 45% increase in six hours. There was a statistically significant decrease in the participants' staying-up time after sauna bathing.

*Putkonen & Elomaa 1976*



## Sauna bathing is exercise

The heat of the sauna makes the heart pump blood faster, expanding the blood vessels and relieving the heart.

*Brunt, Howard, Francisco, Ely, Minston 2016*



## Sauna bathing improves memory

Sauna bathing twice a week decreases the risk of dementia by one fifth compared to those sauna bathing only once a week. The risk is up to 60% less for people sauna bathing 4–7 times a week.

*Laukkanen, Kunutsor, Kauhanen & Laukkanen 2016*



## Sauna bathing cherishes the skin

The heat of the sauna multiplies the amount of blood pumping through superficial veins, which boosts the skin's metabolism. The skin feels nourished, maintains moisture and stays soft and elastic.

*Viinikka 2020*



## Sauna bathing treats muscles

Sauna is a great place for relaxing tense muscles. However, sauna bathing before exercise prevents muscle pains and increases muscle mobility afterwards.

*Khamwong, Paungmali, Pirunsan & Joseph 2015*



## RESPONSIBILITY

### Harvia acts responsibly, respecting nature and people

Responsibility is a central part of our work. We have been making our activities and products more and more sustainable since our beginnings more than 70 years ago, as Harvia has evolved from a traditional heater and sauna manufacturer to a leading international player in the sauna and spa industry.

All Harvia products are made sustainably and designed to be safe and long-lasting. We have long been committed to caring for the environment in every phase of our work, including design, production, logistics, use, and recycling.

The main impacts of our operations on the environment and on people and society arise from the primary production of raw materials and materials used in production, our own production facilities, our activities as an employer, and the use of our products.

We offer consumers all over the world the relaxing and health-promoting benefits of sauna bathing.





## Our commitment to sustainable development for people and the planet

### 1. Good and healthy living

Harvia's products have a positive impact on health and longevity.

We share science-backed information on the health benefits of heat, and promote regular, healthy sauna bathing.

### 2. Responsible experiences and pleasures

We advise our end users on the responsible use of our products.

We invest in the research and development of products that reduce harmful environmental emissions and optimize energy consumption.

We use sustainable and responsibly sourced materials.

### 3. Minimizing our environmental footprint

To help limit global warming and contribute to global efforts to protect the environment, Harvia aims to continually reduce greenhouse gas emissions from its operations.

### 4. A safe and friendly community

At Harvia, we firmly believe that working closely together and supporting each other leads to prosperity and long-term partnerships with employees, customers, and partners.

We care about the safety and skills development of our employees, and we are committed to equality in the workplace.

## Heat the sauna in a way that saves energy

Did you know that with a few simple measures, you can enjoy the heat produced by an electric sauna heater in a more environmentally friendly way?

Read our tips below and try them out the next time you are about to enjoy the health benefits of heat in your sauna.

- 1 Keep the heater in good condition and replace the stones regularly. It is advisable to take out and reinstall the sauna heater stones once a year.
- 2 Allow the sauna to heat for a sufficiently long time and go to sauna as soon as it is ready. This will help you save energy and money.
- 3 Only open doors and windows when necessary (particularly in the winter), as opening them quickly lowers the temperature in the sauna.
- 4 If the sauna is equipped with a vent for drying it, keep it closed while the sauna is being used.
- 5 When you stop using the sauna, try to make sure that the heater has stored enough heat to dry the structures of the sauna.

The heat generated while heating the sauna often remains inside the building, which means that it can be utilized efficiently if you have a heat recovery system or exhaust air heat pump. This way, most of the heat can be used to heat the rest of the building.



## ELECTRIC HEATERS

*Harvia's popular electric heater models are designed to give you the best sauna bath experience in daily use, year after year. Every heater contains top-of-the-line technology and is economical and pleasant to use. Our extensive selection contains heaters for all decors as well as solutions for small saunas, family saunas and large public saunas alike.*

### Wall-mounted heaters

Harvia's wall-mounted electric sauna heaters are particularly suitable for small saunas where the heater should not take up too much space. As the name suggests, the heater is to be mounted on the wall.

*See The Wall, Moderna*

### Pillar heaters

Pillar heaters are excellently suited for private saunas and, depending on their power, also for public saunas. Thanks to the large number of stones, pillar heaters generate pleasant heat, guaranteeing a particularly pleasurable sauna experience.

*See Cilindro, Glow*

### Floor-mounted heaters

We offer a wide selection of floor-mounted heaters, the most effective of which are popular in professional use and large saunas. Floor-mounted heaters can be installed in various ways, also embedded into a bench.

*See Virta, Senator*

### Combi

The Combi heaters contain both an electric sauna heater and an integrated steamer that can be controlled separately. With a Combi heater, you can adjust the humidity level in your sauna with the accuracy of one percent.

*See The Wall Combi, Virta Combi*



## Four electric heater options



**WALL-MOUNTED  
HEATER**



**PILLAR  
HEATER**



**FLOOR-MOUNTED  
HEATER**



**COMBI  
HEATER**

## Many ways to control the heater

From our comprehensive selection of electric sauna heaters, you can choose the control method that best suits your use and sauna.

Harvia's traditional, manually controlled electric sauna heaters are easy to control with the thermostat and timer located at the bottom. The Harvia Spot electric sauna heater also offers the opportunity to turn the heater on and off via the wireless Harvia Spot control panel.

Harvia's model E heaters are compatible with the Harvia control units that offer the opportunity to use the heater in various ways according to your needs. Depending on the functions offered by the control unit, the heater is controlled via a separate control panel. In addition, heaters equipped with a WiFi control unit can be controlled via the MyHarvia mobile application. The model E heaters are easy to maintain and a particularly good choice for new build-ings.

Harvia's easy-to-install XE electric sauna heaters and their various functions are controlled via the fully redesigned Harvia Xenio control panel. The control panel can be mounted on or embedded into a wall, for example, which enables the embedding of the heater into a bench. The XE heaters also support remote control with an accessory package (sold separately) and the MyHarvia mobile application.

Harvia's E and XE electric sauna heaters can be controlled remotely using the MyHarvia mobile application. To control an XE heater remotely, you need a Harvia Xenio WiFi accessory package (sold separately), which contains a Xenio WiFi control panel and a safety device for the heater. To control an E heater remotely, you need a Harvia Xenio CX170 and a Xenio Combi CX110C control panel as well as a Xenio WiFi accessory package (the year of manufacture of the control unit must be 2020 or later). No accessory package is required for new Harvia Xenio CX170 WiFi and Xenio Combi CX110C WiFi control units.

## Selecting a heater

The heater is part of the sauna's interior design and ambience. Find the right design for you from Harvia's range of wood burning heaters. A properly built sauna room is a very important factor in getting the most out of your wood burning heater. The heater power is selected based on the size and material of the sauna.

An average of 1 kW of power is required for each cubic metre of sauna volume. The power requirement increases if there are window surfaces or heat-storing surfaces such as brick or concrete in the sauna.

## Considerations when choosing the heater power:

- Start the selection process by measuring the cubic volume of your sauna.
- For each non-insulated square meter, add 1.2 cubic meters to the volume of the sauna.
- If the interior walls of the sauna room are made of non-insulated logs, the corresponding factor is 1.5.
- A handy tool is available for these calculations at [www.harvia.com](http://www.harvia.com)



## HEATERS FOR SMALL SAUNAS

*The size of the sauna does not affect the quality of the heat source. Harvia offers stylish easy-to-use options for saunas of all sizes. Our electric sauna heaters designed for small saunas produce very pleasant heat.*

### Delta, Delta XE, Delta Combi

The Harvia Delta is a triangular, space-efficient heater, the design of which is based on the Greek letter delta ( $\Delta$ ). The stylish heater, made of shiny stainless steel, contains a generous amount of stones that give off a wonderful cloud of steam. Thanks to its design, the Delta can be placed in a corner for optimal utilisation of space. The heater is easy to mount on the separate wall rack included in the delivery. The switches for operating manually controlled sauna heaters can be found at the bottom of the heater.

Sauna heaters that have a separate control panel are marked with the symbol XE.

The range of Delta heaters also includes the smallest Combi heater in the world: the Delta Combi. This heater is created for bathers who appreciate soft and humid steam and a fragrant atmosphere.



DELTA



DELTA XE



DELTA COMBI



VEGA COMPACT

## Vega Compact

The Harvia Vega Compact is a true powerhouse heater for small saunas. The heater's operating switches are located near the top of the heater, making the heater easy and ergonomic to use. The Vega Compact can be installed particularly low on the sauna wall. This allows the heat to spread evenly throughout the sauna, ensuring that the lower benches also enjoy plenty of heat.

The Vega Compact is easy to install. Just install the wall rack, lift the heater onto it and secure it in place with one screw. The heater is made of stainless steel.

## Vega

Harvia Vega is a modern, easy-to-use heater. Vega's stainless-steel exterior is durable and gives your sauna a modern look. The operating switches are placed at the top of the heater to ensure an ergonomic user experience, and thanks to the symmetrical shape of the switches, their handedness can be selected freely.



VEGA

Heater model	Power kW	Recommended sauna room size min.-max. m <sup>3</sup>	Sauna room height min. mm	Stone capacity max. kg	Dimensions width x depth x height	Weight kg
Delta D36	3,6	2-4,5	1700	11	340 x 200 x 635	8
Delta D23XE	2,3	1,3-2,5	1700	11	340 x 200 x 635	8
Delta D36XE	3,6	2-4,5	1700	11	340 x 200 x 635	8
Delta Combi 29SE	2,9	1,5-4	1700	11	340 x 200 x 635	8
Vega Compact BC23	2,3	1,3-2,5	1700	12	365 x 295 x 505	7
Vega Compact BC35	3,5	2-4,5	1700	12	365 x 295 x 505	7
Vega BC45	4,5	3-6	1900	20	480 x 310 x 540	11
Vega BC60	6,0	5-8	1900	20	480 x 310 x 540	11
Vega BC80	8,0	7-12	1900	20	480 x 310 x 540	11





## HARVIA HEATERS FOR FAMILY AND PUBLIC SAUNAS

*Enjoy a happy moment in the sauna with your family – or dedicate the relaxing sauna experience to yourself.*

*Design your sauna to suit the needs of your family and choose a suitable Harvia heater as its heart. The heaters in the Harvia family sauna range represent the well-known quality of Harvia: elegant, easy to use, durable and economic.*



## The Wall

Despite its output of up to 9 kW, The Wall requires only little space inside the sauna. This heater was created with a focus on functionality. Illuminated switches, durable construction and ease of installation make The Wall a great product. The total package is both compact and stylish.

The illuminated operating switches are visible and simple to use even in dim saunas. The Wall's structures and material are strong and durable. Its heating elements have their own support structure to protect them, preventing them from twisting and thus extending their lifespan. Components that are exposed to heat and moisture are located at the bottom of the stove. The heating element's structure is designed to withstand prolonged, efficient heating.

The unique Harvia mounting/wall rack included in the scope of delivery determines the minimum safety distance between the heater and the floor. Installation of the heater is quick and easy.

The model E stove is controlled by a separate control unit. Thanks to the control unit, The Wall E can also be integrated into the bench, giving you more flexibility in regard to the design of your sauna room.

### OPTIONS



Embedding flange  
HSW1



Protective glass sheath  
HSW5 /  
with LED-lights  
HSW5L

### RECOMMENDED PRODUCTS



Xenio CX170XW WIFI  
control unit  
(The Wall E)



Xenio Combi  
CX110CXW WIFI  
control unit  
(The Wall Combi)





**THE WALL**  
Black Steel



**THE WALL**  
Steel



**THE WALL E**  
Black Steel



**THE WALL E**  
Steel

Heater model	Power kW	Recommended sauna room size min.-max. m <sup>3</sup>	Sauna room height min. mm	Stone capacity max. kg	Dimensions width x depth x height	Weight kg
The Wall SW60 / The Wall E SW60E	6,0	5-8	1900	20	430 x 260 x 610	12
The Wall SW80	8,0	7-12	1900	20	430 x 260 x 700	14
The Wall SW60 / The Wall E SW60E	6,0	5-8	1900	20	430 x 260 x 610	12
The Wall SW80	8,0	7-12	1900	20	430 x 260 x 700	14
The Wall SW90 / The Wall SW90E	9,0	8-14	1900	20	430 x 260 x 700	15/11



**HARVIA**

## The Wall Combi

This heater has been designed for you who appreciate humid sauna bathing and ambience provided by the sauna scents. Having sauna with a Wall Combi heater with an integrated steaming function is a multi-sensory experience. One heater provides multiple ways of enjoying sauna. Wall Combi -heater adapts to your personal, friends' and family's sauna preferences.

### Enjoy steady humidity

The integrated steamer of the Wall Combi heater generates and maintains steady humidity in the sauna – with precision down to the percentage. The steam makes the sauna heat more pleasant, providing a soft and humid bathing experience. You can add fragrances to the stone cup of the sauna heater.



THE WALL COMBI

#### Soft and gentle sauna

Add water to the steamer and set the temperature to a lower level eg. 50-60 degrees of Celsius. Enjoy soft and gentle feeling provided by high humidity and lower temperature. You can enjoy sauna longer and relax in conditions that suit you the best. You can add fragrances to the stone cup of the heater to enhance the ambience.



#### Combined sauna

When the steamer is on you can adjust the humidity to the level that suits you the best. If you like a higher warmth adjust the temperature already to eg. 60-80 degrees. You can also throw water to the stones whenever you feel in order to enhance the feel of moisture and warmth.



#### Hot Sauna

Use Wall Combi – heater without the steaming function like an ordinary electric sauna heater- You can set the temperature high eg. To 80-100 degrees Celsius and throw water to the stones as much as suits you. The air in the saunaroom is dryer and hotter.



Heater model	Power kW	Recommended sauna room size min.-max. m <sup>3</sup>	Sauna room height min. mm	Stone capacity max. kg	Dimensions width x depth x height	Weight kg
The Wall Combi SW45S / SW45SA	4,5	5-10	1900	20	380 x 355 x 710	16,0
The Wall Combi SW70S / SW70SA	7,0	8-14	1900	20	380 x 355 x 710	16,8
The Wall Combi SW90S / SW90SA	9,0	9-18	1900	20	380 x 355 x 710	16,8





## KIP

The Harvia KIP, a favourite among Finns, is a traditional wall-mounted heater in which price and quality meet in a manner that is sure to warm the bather. Reliable and affordable, KIP is also adaptable, as the control switches on the lower part of the heater can be placed on the left or right side or on the front.

The heater has a glossy, black outer casing.



KIP



TOP STEEL

TOP STEEL E

## Top Steel

The Harvia Top Steel, a favourite among Finns, is a traditional wall-mounted heater in which price and quality meet in a manner that is sure to warm the bather. Sleek and clear in its design, Top Steel has earned its position as a favourite in numerous saunas in the land of a thousand lakes. The E model sauna heaters are controlled by a separate control unit.



## Moderna

Harvia Moderna is the royalty of electric sauna heaters. Moderna will heat up your sauna quickly – and thanks to the digital control, to the exact temperature you want, to the accuracy of a single degree. A separate electronic sensor maintains a steady temperature for as long as you need.

Moderna's digital Xenio XE control panel makes it extremely easy to use. All the functions are integrated directly to the Moderna heater, enabling easy installation whether you are building a new sauna or putting in a new heater in your old sauna.

The buttons on the Xenio control panel are illuminated for ease of use in dimly lit saunas. Use the control panel to adjust the temperature, lighting and timers. With the timer, you can have the sauna ready whenever it suits you. The control panel can be placed inside the sauna, doubling as a digital thermometer. The XE model can be started remotely, and the safety equipment can be integrated directly into the heater.



MODERNA XE

Heater model	Power kW	Recommended sauna room size min.-max. m <sup>3</sup>	Sauna room height min. mm	Stone capacity max. kg	Dimensions width x depth x height	Weight kg
KIP60	6,0	5-8	1900	25	410 x 280 x 600	16
KIP80	8,0	7-12	1900	25	410 x 280 x 600	16
Top Steel M45 / M45E	4,5	3-6	1900	20	410 x 290 x 650	16
Top Steel M60 / M60E	6,0	5-8	1900	20	410 x 290 x 650	16
Top Steel M80 / 80E	8,0	7-12	1900	20	410 x 290 x 650	16
Top Steel M90E	9,0	8-14	1900	20	410 x 310 x 580	15
Moderna V45XE	4,5	3-6	1900	20	410 x 310 x 580	15
Moderna V60XE	6,0	5-8	1900	20	410 x 310 x 580	15
Moderna V80XE	8,0	7-12	1900	20	410 x 310 x 580	15



## Combinator

Harvia Combinator is a combined electric heater and steamer that provide different sauna pleasures. You can select between a traditional Finnish sauna, a steam sauna, a herbal sauna or a fragrant sauna. This heater is the correct choice for bathers who appreciate a soft and humid bath and an aromatic atmosphere.

Combinator is a wall-mounted electric heater. The water tank holds 5 litres. The heater has soapstone cups to hold liquid fragrances and a stainless steel grate for bagged aromatic fragrances.



**COMBINATOR**



**TOPCLASS COMBI**

## Topclass Combi

The Topclass Combi is a unique combination of an electric heater and a steamer that provides sauna enjoyment for all senses. You can select between a traditional Finnish sauna, a steam sauna, a herbal sauna or an aromatic sauna. This heater is created for users who appreciate soft and humid steam and a fragrant atmosphere. The heater has soapstone cups to hold sauna fragrances and a stainless steel grate for bagged aromatic fragrances.

Topclass Combi heaters are controlled by a separate control unit.

### RECOMMENDED PRODUCTS



Xenio Combi  
CX110CXW WIFI  
control unit



**SAUNA STEAMER**

## Sauna steamer

The Harvia Sauna Steamer is an add-on device that works independently along with an electric heater to make the sauna experience more gentle and humid. Safe and easy-to-use, the Harvia Sauna Steamer brings a spa atmosphere and the feeling of a steam room to an ordinary sauna. The gently humid steam promotes beauty and health, as it opens your airways, makes your skin beautiful and relaxes your body and mind. Make your sauna an oasis of well-being by purchasing the Harvia Sauna Steamer.

### RECOMMENDED PRODUCTS

Xenio Combi  
CX110CXW WIFI  
control unit



## Hidden heater

Harvia Hidden Heater is a practical heater requiring very little space. It is mounted behind the benches and is therefore very well-suited for community saunas.

Optional accessories for Hidden Heater include a soapstone bowl and a flexible hose pipe. The heat remains comfortably even when water is conveyed to the heater little by little. The bowl is placed on the bench and water is poured into it. The hose pipe takes the water to the heater.

This heater is designed for heavy-duty use and completely made of high-quality stainless steel.

The Hidden Heater is controlled by a separate control unit.



**HIDDEN HEATER**

Heater model	Power kW	Vaporizer kW		Recommended sauna room size min.-max. m <sup>3</sup>	Sauna room height min. mm	Stone capacity max. kg	Dimensions width x depth x height	Weight kg
		Output kw	Max. vaporisation efficiency kg/h					
Combinator KM60SE	6,0	2,0	2,5	5-8	1900	25	400 x 330 x 645	16
Combinator KM80SE	8,0	2,0	2,5	7-12	1900	25	400 x 330 x 645	16
KV60SE	6,0	-	-	5-8	1900	20	400 x 360 x 640	16
KV80SE	8,0	-	-	7-12	1900	20	400 x 360 x 640	16
KV90SE	9,0	-	-	8-14	1900	20	400 x 360 x 640	16
Sauna steamer SS20	2,0		ca. 2,5	-	-	-	340 x 95 x 680	6
Sauna steamer SS20A	2,0		ca. 2,5	-	-	-	340 x 95 x 680	6
Hidden heater HH6	6,0	-	-	6-10	2100	15	1175 x 290 x 830	33
Hidden heater HH9	9,0	-	-	10-14	2100	15	1175 x 290 x 830	33
Hidden heater HH12	12,0	-	-	12-17	2100	15	1175 x 290 x 830	33





## Globe

The Harvia Globe sauna heater offers you a pleasant sauna experience, not only through heat and steam but also through its unique design and excellent usability.

The Harvia Globe is also an example of environmentally friendly design: it is made from high-quality materials – sturdy stainless steel – and no harmful chemicals are used in its surface finish. A completely new way of thinking is also apparent in the design of the heater, which is made out of precisely laser-cut steel arches and rings. The amount of sauna stones is optimised: the heater heats up quickly enough without sacrificing the softness of the steam.

The Harvia Globe is controlled by a separate control unit. The E models include a connection box for electrical input from the control unit. The heater is connected to the connection box via a cable running inside an armoured tube. Supplied with a height adjustable stand.



Heater model	Power kW	Recommended sauna room size min.-max. m <sup>3</sup>	Sauna room height min. mm	Stone capacity max. kg	Dimensions width x depth x height	Weight kg
Globe GL70E	6,9	6-10	1900	50	430 x 430 x 875	16
Globe GL110E	10,5	9-15	1900	80	500 x 500 x 955	19

### OPTIONS



Safety railing Globe  
-kiukaalle HGL7



Embedding flange  
HPC2



Valaistu Embedding flange  
HPC2L

### RECOMMENDED PRODUCTS



Xenio CX170XW WIFI  
control unit



# Legend

Handmade – stories about steam



Complete your sauna experience with Legend sauna accessories



Legend sauna bucket  
SASPO100

Legend ladle  
SASPO101



Legend clothes hanger  
SASPO103



Legend thermometer  
SASPO104



Legend sauna light  
SAS21107

## Harvia Legend XE

The digital Xenio control panel makes it extremely easy to use. All the functions are integrated directly into the Legend heater, enabling easy installation whether you are building a new sauna or putting in a new heater in your old sauna. The buttons on the Xenio control panel are illuminated for ease of use even in dimly lit saunas. Use the control panel to adjust the temperature, lighting and timers. With the timer, you can have the sauna ready whenever it suits you. The control panel can be placed inside the sauna, doubling as a digital thermometer. The XE model can be started remotely, and the safety equipment can be integrated directly into the heater.

## Harvia Legend XW WiFi

The Legend XW model is a ready-made package to be remote controlled via My-Harvia mobile app. The Harvia Legend XW electric heater includes a Xenio WiFi control panel and door sensor to secure the safe remote use of the heater.

## Harvia Legend E

The Legend model E sauna heater, equipped with a separate control unit, enables various connection options in home and especially in professional use. Select the Harvia control unit system that suits your needs best, or connect your Legend model E electric sauna heater to your existing heater's Harvia control unit.



Heater model	Power kW	Recommended sauna room size min.-max. m <sup>3</sup>	Sauna room height min. mm	Stone capacity max. kg	Dimensions width x depth x height	Weight kg
Legend XE PO70XE	6,8	6-10	1900	100	1080 x 325 x 325	18,5
Legend XW PO70XW WiFi	6,8	6-10	1900	100	1080 x 325 x 325	18,5
Legend E PO70E	6,8	6-10	1900	100	1080 x 325 x 325	18,5
Legend XE PO110XE	11	9-18	1900	100	1080 x 325 x 325	18,5
Legend XW PO110XW WiFi	11	9-18	1900	100	1080 x 325 x 325	18,5
Legend E PO110E	11	9-18	1900	100	1080 x 325 x 325	18,5

### OPTIONS



Safety railing HPO3 /  
Illuminated safety railing  
HPO3L



Embedding flange  
HPO2



Protective sheath  
HPO11



Extension base  
HPC20

### RECOMMENDED PRODUCTS



Xenio CX170XW WIFI  
control unit  
(Legend E)





## OPTIONS



Safety railing  
SASPO240 (Ø 850 mm)  
SASPO241 (Ø 780 mm)



Safety railing with  
LED lights  
SASPO240L (Ø 850 mm)  
SASPO241L (Ø 780 mm)



Autodose sauna water  
dispenser  
SASL1



Autodose Design  
piping  
SASL2M

## Legend Pro

The Harvia Legend provides you with the ultimate sauna experience. This large heater takes you back to the origins of heaters – it is a heater in its purest form. The patinated steel frame of the Harvia Legend contains a large amount of stones that gives off great steam even in large saunas as it heats up. Due to the open structure of the stone compartment, you can throw water on the entire outer surface of the heater. The heat charged in the large number of stones allows you to throw more water even at a lower temperature – you can enjoy delightfully humid steam in your sauna.

Due to its circular shape, the Harvia Legend heater can be installed in the middle of the sauna or embedded into the bench. The heater is controlled by a separate control unit.



**LEGEND PRO**  
P011



**LEGEND PRO**  
P0165

Heater model	Power kW	Recommended sauna room size min.-max. m <sup>3</sup>	Sauna room height min. mm	Stone capacity max. kg	Dimensions width x depth x height	Weight kg
Legend P011	11	9–20	1900	120	530 x 530 x 740	30
Legend P0165	16,5	16–35	2100	220	600 x 600 x 830	33

### RECOMMENDED PRODUCTS



Xenio CX170XV  
WIFI  
control unit



C170VKK  
control unit



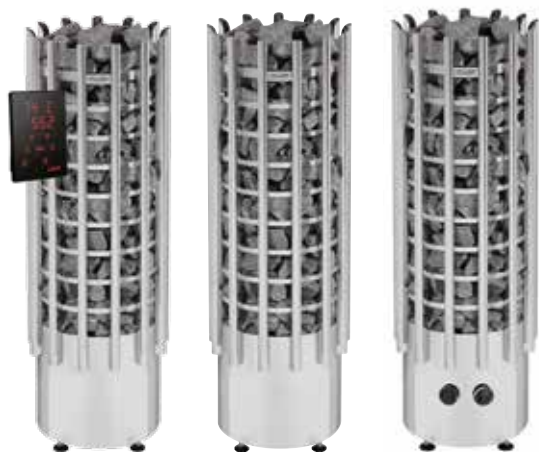


## Glow, Glow corner

Harvia Glow pillar heater has been designed to meet the needs of even the most demanding sauna decorator. Choose the tall, pillar model Glow or corner-mounted Glow Corner as the eye-catcher of your sauna interior.

In addition to their aesthetic, Glow heaters also offer a pleasant sauna experience: the large stone quantity enables soft, comfortable steam. The heater's outer casing reveals plenty of surface made of the stones, and you can control the amount of steam and its heat by either throwing water directly on the stone pillar or on its side.

In a manually operated heater, the operating switches are located on the lower part of the heater. The letters "XE" signify that the heater is equipped with a dedicated control panel. The letter "E", on the other hand, denotes that the heater is designed to be used with a separate control unit.



GLOW XE

GLOW E

GLOW



GLOW  
CORNER XE

GLOW  
CORNER E

GLOW  
CORNER

Heater model	Power kW	Recommended sauna room size min.-max. m <sup>3</sup>	Sauna room height min. mm	Stone capacity max. kg	Dimensions width x depth x height	Weight kg
Glow TRT70 / TRT70E / TRT70XE	6,8	6-10	1900	80	364 x 364 x 1076	14
Glow TRT90 / TRT90E / TRT90XE	9,0	8-14	1900	90	364 x 364 x 1076	14
Glow corner TRC70 / TRC70E / TRC70XE	6,8	6-10	1900	50	330 x 330 x 1100	16,3
Glow corner TRC90 / TRC90E / TRC90XE	9,0	8-14	1900	50	330 x 330 x 1100	19,7

### OPTIONS



Safety railing  
HTRT3



Embedding flange  
HPC2



Valaistu upotus-  
kaulus HPC2L



Upotus-  
kaulus HTRC1



Safety railing  
HTRC3  
Valaistu Safety  
railing  
HTRC3L

### RECOMMENDED PRODUCTS (E-mallin kanssa)



Xenio CX170XW WIFI  
control unit



C170VKK  
control unit



*Innovative sauna control*



WIRELESS  
CONTROL



ON-TIME  
CONTROL



ON/OFF  
FUNCTION



## Cilindro Plus Spot

The Harvia Cilindro Plus electric sauna heater is an impressive pillar heater consisting of a massive amount of stones. The heater's outer casing reveals plenty of surface made of these stones. You can control the amount of steam and its heat by either throwing water directly on the stone pillar or on its side. The tall pillar heater is an impressive sight when embedded into the benches and its brushed stainless steel exterior gives it a finished look.

Harvia's Cilindro Plus Spot heaters have been equipped with a new control unit integrated into the heater, which can be controlled using a wireless Spot control switch (delivered with the heater).

### Spot, the wireless control switch

Harvia Spot wireless control switch enables the easy and safe use of the Cilindro Plus Spot sauna heater. The Spot switch has no visible cables and it is easy to install. The splash-proof Spot control switch can be installed inside the sauna or the washroom, in the immediate vicinity of the heater.

The stylish, illuminated control switch enables switching the heater on or off with just one light touch. The signal LED lights of the control switch show the mode of use. The heater's on-time can be adjusted (2h/4h/6h).

The radio signal range is 5–10 meters depending on the wall structures. Spot works on batteries.



**CILINDRO  
PLUS SPOT**

Heater model	Power kW	Recommended sauna room size min.-max. m <sup>3</sup>	Sauna room height min. mm	Stone capacity max. kg	Dimensions width x depth x height	Weight kg
Cilindro Spot PP70SP	6,8	6-10	1900	90	310 x 310 x 1020	11,5
Cilindro Spot PP90SP	9,0	8-14	1900	90	310 x 310 x 1020	12,2

### OPTIONS



Protective sheath  
HPP1



Safety railing  
HPP3,  
Safety railing  
with LED lights  
HPP3L



Embedding flange  
HPC2



Illuminated  
embedding flange  
HPC2L



Extension base  
HPC20



## Cilindro

Harvia Cilindro pillar heaters are stylish electric heaters ideal for many needs. The size and massive stone quantity of the heater are optimised to provide a smooth, yet powerful sauna bath in saunas of all sizes – from small family saunas to large public ones.

The pillar form factor offers freedom for sauna design, making the heater easy to embed into the bench or place in front of a glass wall for an eye-catching display. The Cilindro heaters combine high quality with an impressive appearance. The glossy stainless steel exterior is a great addition to any sauna.

Harvia Cilindro heaters are available with a range of control options corresponding to different needs. Depending on the model, the heater is controlled mechanically, with a separate control unit or via the completely redesigned digital Harvia Xeno control panel. Simply choose the option that is best suited to your needs!

### MANUAL CONTROL



CILINDRO

### CONTROL PANEL



CILINDRO XE

**XENIO CX001WIFI**  
accessory package helps  
make your XE heater  
completely remote  
controllable



### OPTIONS



Embedding flange  
HPC1  
(6,8/9,0 kW)



Embedding flange  
Black Steel  
HPC1M  
(6,8/9,0 kW)



Embedding flange  
HPC2  
(6,8/9,0/10,8 kW)



Illuminated  
embedding flange  
HPC2L  
(6,8/9,0/10,8 kW)



Safety railing  
HPC3  
(6,8/9,0 kW)



Safety railing with  
LED lights HPC3L  
(6,8/9,0 kW)

Heater model	Power kW	Recommended sauna room size min.-max. m <sup>3</sup>	Sauna room height min. mm	Stone capacity max. kg	Dimensions width x depth x height	Weight kg
Cilindro PC 66 / PC66E	6,6	5-9	1900	75	255 x 255 x 1340	11
Cilindro PC70	6,8	6-10	1900	80	320 x 320 x 930	10
Cilindro PC70E / PC70XE / PX70XW	6,8	6-10	1900	90	320 x 320 x 930	10
Cilindro PC90	9,0	8-14	1900	80	320 x 320 x 930	10
Cilindro PC90E / PC90XE / PC90 XW	9,0	8-14	1900	90	320 x 320 x 930	10
Cilindro PC110XE	10,8	9-18	1900	120	365 x 365 x 1070	13

#### WIFI CONTROL PANEL

#### SEPARATE CONTROL UNIT



CILINDRO XW



CILINDRO E

#### RECOMMENDED PRODUCTS

(With the E model)



Xenio CX170XW WIFI control unit

Model E heaters require  
**A SEPARATE CONTROL UNIT**  
Additional information on Harvia's control units is available at [www.harvia.com](http://www.harvia.com)



Safety railing  
HPC4  
(10,8 kW)



Safety railing with  
LED lights  
HPC4L (10,8 kW)



Safety railing  
HPC10  
(6,6 kW)



Safety railing with  
LED lights  
HPC10L  
(6,6 kW)



Protective sheath  
Black Steel  
HPC11M



Extension base  
HPC20





## OPTIONS



Protective sheath  
HPC5  
(11–20 kW)



Safety railing  
HPC6  
(11 / 13,5 kW)



Embedding flange  
HPC7  
(16,5 / 20 kW)



Autodose sauna  
water dispenser  
SASL1



Autodose Design  
piping  
SASL2M

## Cilindro Pro

The Cilindro Pro electric heater gives off hearty steam in a family sauna, but the superior features of the heater are especially beneficial to public saunas, hotels and housing companies, for example. The impressive pillar heater contains a massive amount of stones, and the robust heating elements are designed to withstand long operating times. This guarantees plenty of hearty steam for large groups of users. When you want the most out of your heater, choose the professional quality of the world's largest sauna heater manufacturer.

The Cilindro Pro 100E/135E can be modified to either 10 or 13.2 kW. The Cilindro Pro 165E/200E heater, on the other hand, can be modified to either 16.6 or, when divided into two groups, to 19.8 kW.

The heater is equipped with a separate control unit.

Model E heaters require  
**A SEPARATE  
CONTROL UNIT**  
Additional information on  
Harvia's control units is  
available at  
[www.harvia.com](http://www.harvia.com)



**CILINDRO PRO**  
Black Steel  
PC100E / PC135E



**CILINDRO PRO**  
Steel  
PC100E / PC135E



**CILINDRO PRO**  
Steel  
PC165E / 200E

Heater model	Power kW	Recommended sauna room size min.-max. m <sup>3</sup>	Sauna room height min. mm	Stone capacity max. kg	Dimensions width x depth x height	Weight kg
Cilindro Pro PC100E	10	9-16	1900	140	355 x 355 x 1300	18
Cilindro Pro PC135E	13,2	10-20	1900	140	355 x 355 x 1300	18
Cilindro Pro PC165E	16,6	15-25	2100	220	450 x 450 x 1300	25
Cilindro Pro PC200E	19,8	20-30	2100	220	450 x 450 x 1300	25

### RECOMMENDED PRODUCTS



Xenio CX170XW WIFI  
control unit



C170VKK  
control unit



C400VKK  
control unit



LTY17  
additional power unit





## Virta

*Strong, practical and simple  
yet stylish electric heaters*

Their strong structure and exceptional ease of maintenance make Virta heaters excellently suitable for those who use the sauna often and like to enjoy the steam for long periods of time.

All connections to the Virta heater are made through the maintenance hatch on the front. There is plenty of room around the connections. The heating elements are separated from the stones, which results in a long heating element life span. If you need to replace a heating element, it is a quick and easy task, as you can just pull out the entire heating element module. Other maintenance measures were also taken into account in the heaters' design from the very start.

The sauna heaters are controlled via a separate control unit.





The Harvia Virta is a sturdy heater that provides soft steam for those who appreciate a traditional sauna experience. Three different power versions of the heater are available, the most high-powered version being the HL110, which is 7 cm larger in depth than the HL70 and the HL90.



**VIRTA COMBI**



**VIRTA**

The Virta Combi is a combined electric heater and steamer that provides a variety of sauna experiences. You can select between a traditional Finnish sauna, a steam sauna, a herbal sauna or an aromatic sauna. The Combi heater is the right choice for those who enjoy soft and humid steam and the atmosphere created by fragrances. The water tank holds 5 litres – depending on the model, the tank is filled either by manually pouring water into the tank or automatically from a water outlet. The heater has a soapstone cup to hold sauna fragrances and a stainless steel grate for bagged aromatic fragrances. The Combi system is reliable and easy to use.

Heater model	Power kW	Recommended sauna room size min.-max. m <sup>3</sup>	Sauna room height min. mm	Stone capacity max. kg	Dimensions width x depth x height	Weight kg
Virta HL70 / HLS70	6,8	5-10	1900	50	415 x 340 x 810	21
Virta HL90 / HLS90	9,0	8-14	1900	50	415 x 340 x 810	21
Virta HL110/HLS110	10,8	9-18	1900	70	415 x 410 x 810	24
Virta Combi HL70S / HL70SA	6,8	5-10	1900	50	415 x 410 x 810	27
Virta Combi HL90S / HL90SA	9,0	8-14	1900	50	415 x 410 x 810	27
Virta Combi HL110S / HL110SA	10,8	9-18	1900	70	415 x 485 x 810	29

## OPTIONS



Safety railing  
HL1, HL2, HL3, HL4

## RECOMMENDED PRODUCTS



C170VKK  
control unit



Xenio CX170XW WIFI  
control unit



Xenio Combi  
CX110CXW WIFI  
control unit



LTY17  
additional power unit



Harvia Virta Pro models provide abundant heating power for saunas installed in spas, hotels and apartment buildings, for example. Thanks to its strong construction, heating elements divided into two groups and exceptional ease of maintenance, the Virta Pro heater is an excellent choice for heavy duty use.



VIRTA PRO COMBI



VIRTA PRO

Harvia Virta Pro Combi models are intended for larger saunas that require the diversity introduced by the steamer. Gyms and wellness centres in particular can benefit from the heater's features.

Heater model	Power kW	Recommended sauna room size min.-max. m <sup>3</sup>	Sauna room height min. mm	Stone capacity max. kg	Dimensions width x depth x height	Weight kg
Virta Pro HL135	13,5	11-20	2100	100	780 x 340 x 810	41
Virta Pro HL160	15,8	16-25	2100	100	780 x 340 x 810	41
Virta Pro HL220	21,6	22-32	2100	140	780 x 410 x 810	47
Virta Pro Combi HL135SA	13,5	11-20	2100	100	780 x 410 x 810	53
Virta Pro Combi HL160SA	15,8	16-25	2100	100	780 x 410 x 810	53
Virta Pro Combi HL220SA	21,6	22-32	2100	140	780 x 485 x 810	57

## OPTIONS



Safety railing  
HL2, HL3, HL4, HL5

## RECOMMENDED PRODUCTS



C170VKK  
control unit



Xenio CX170XW WIFI  
control unit



Xenio Combi  
CX110CXW WIFI  
control unit



LTY17  
additional power unit





## Forte

Harvia's always-ready Forte electric sauna heater is a perfect choice for those who use the sauna frequently and want to enjoy the heat immediately. Forget the hustle and bustle of everyday life and enjoy the health benefits of going to sauna anytime you want. All you need to do is lift the cover, throw water on the hot stones and enjoy the pleasant sauna experience offered by the Forte heater. With the Forte heater, you can have an extremely humid sauna or a hotter and drier sauna – whatever you like.

The modern exterior of Harvia Forte hides a thermally insulated stone space that keeps the stones hot. Thanks to its round shape and cool exterior surface, the heater is always safe for sauna-goers of all sizes and ages. The Forte heater is always in energy-saving mode when it is not being used. You can release the heat energy stored by the stone space quickly and enhance the effect by throwing water on the stones. Taking a sauna is easy as the heater is always ready.

The heater can be controlled accurately to always ensure a pleasant sauna experience. Harvia Forte's digital Harvia Xafir control panel allows you to control the heater's features and energy consumption, for example. The control panel can also be installed inside the sauna. The control panel informs you if you have left the cover of the heater open and turns the heater off.

Harvia Forte is an excellent choice for private saunas and persons who like to take a sauna several times a week. The effective thermal insulation keeps the stone space warm, and when the heater is in the energy-saving mode, the heater functions as a sauna radiator and no energy goes to waste.



Heater model	Power kW	Recommended sauna room size min.-max. m <sup>3</sup>	Sauna room height min. mm	Stone capacity max. kg	Dimensions width x depth x height	Weight kg
Forte AFB4	4,0	5-8	1900	100	500 x 535 x 830	30
Forte AFB6	6,0	7-12	1900	100	500 x 535 x 830	30
Forte AFB9	9,0	10-15	1900	100	500 x 535 x 830	30

### OPTIONS



Embedding flange  
HAF1



## Senator

The Harvia Senator is a floor-mounted electric heater specifically designed for those who like to spend a long time in the sauna. The large stone compartment and six heating elements warm up the sauna evenly and efficiently. A constant temperature and soft steam are ideal for enjoying the sauna for longer periods of time.

The Senator is made almost entirely of stainless steel. The heater is well-suited for family saunas or small shared saunas in terraced houses or apartment buildings.

The Senator heater is controlled by a separate control unit.



**SENATOR**  
Black



**SENATOR**  
Steel

### OPTIONS



Autodose sauna  
water dispenser  
SASL1



Autodose Design  
piping  
SASL2M

### RECOMMENDED PRODUCTS



Xenio CX170XW  
WIFI  
control unit



C170VKK  
control unit



## Senator Combi

The Harvia Senator Combi heater is a versatile combination of an electric heater and a steamer that provides gentle and warm Sauna & Spa experiences. The floor-mounted Senator Combi can create a traditional Finnish sauna, a steam sauna, a herbal sauna or a fragrant sauna – all sauna experiences in one package. The stylish stainless steel heater creates a spa atmosphere in family saunas and shared saunas in apartment buildings and terraced houses. Enjoy the beautifying and healthy power of steam by Harvia.

Senator Combi heaters are controlled by a separate control unit.



SENATOR COMBI

Heater model	Power kW	Recommended sauna room size min.-max. m³	Sauna room height min. mm	Stone capacity max. kg	Dimensions width x depth x height	Weight kg
Senator T9	9,0	8-14	1900	40	465 x 345 x 660	19
Senator T10,5	10,5	9-15	1900	40	465 x 345 x 660	19
Senator Combi T7C / T7CA	7,0	6-9	1900	35	345 x 465 x 660	20
Senator Combi T9C / T9CA	9,0	8-14	1900	35	345 x 465 x 660	20

### OPTIONS



Autodose sauna water dispenser SASL1



Autodose Design piping SASL2M

### RECOMMENDED PRODUCTS



Xenio Combi CX110CXW WIFI control unit



## Club

The Harvia Club heater is a heavy duty heater with enough steam for a large group of users, from morning till night. Heaters used in large saunas or on a continuous basis must be functional, efficient and comfortable to use. The impressive floor-mounted Club electric heater with a steel outer shell is perfect for this purpose after all, it represents the world-famous quality of Harvia. Equipped with a separate control unit, the Club super heater is excellently suited for apartment buildings, hotels, holiday resorts, sports centres and swimming halls as well as large family saunas. Choose Club when you demand super power and durability from your heater.

Club heaters are controlled by a separate control unit.



**CLUB**



**CLUB COMBI**

## Club Combi

The Harvia Club Combi is a combination of an electric heater and a steamer that offers a variety of sauna experiences, such as a traditional sauna, a steam sauna, a herbal sauna or a fragrance sauna. The super-efficient Club Combi combination heater is designed to have enough steam for a large group of users, from morning till night.

The stylish, floor-mounted Club Combi electric heater made of stainless steel represents the world-famous quality of Harvia. When you wish to experience or provide your customers with true Sauna & Spa experiences, familiarise yourself with the super-efficient Club Combi models.

Club Combi heaters are controlled by a separate control unit.

### OPTIONS



Autodose sauna  
water dispenser  
SASL1



Autodose Design piping  
SASL2M

### RECOMMENDED PRODUCTS



Xenio CX170XW  
WIFI  
control unit



C170VKK  
control unit



**CLUB PRO**

## Club Pro

The Harvia Club Pro heater is designed to be a super heater that provides ample steam for large groups from morning till night. The heater is suitable for apartment buildings, hotels, holiday resorts, sports centres and spas etc. Heaters used in large saunas or on a continuous basis must be functional, efficient and easy to use. The range of floor-mounted Club Pro heaters is of world-famous Harvia quality that will not pale in comparison. Most importantly, the Club Pro heater provides your demanding customers with professional sauna enjoyment and moments of relaxation.

Club Pro heaters are controlled by a separate control unit.

Heater model	Power kW	Recommended sauna room size min.-max. m <sup>3</sup>	Sauna room height min. mm	Stone capacity max. kg	Dimensions width x depth x height	Weight kg
Club K11G	11,0	9-16	1900	60	505 x 430 x 700	25
Club K13,5G	13,5	11-20	2100	60	505 x 430 x 700	25
Club K15	15,0	14-24	2100	60	505 x 430 x 700	25
Club Combi K11GS	11,0	9-16	1900	60	505 x 490 x 700	30
Club Combi K13,5GS	13,5	11-20	2100	60	505 x 490 x 700	30
Club Combi K15GS	15,0	14-24	2100	60	505 x 490 x 700	30
Club Pro L20	20,0	18-30	2100	100	500 x 900 x 730	60
Club Pro L26	26,0	30-46	2200	100	500 x 900 x 730	60
Club Pro L30	30,0	40-56	2200	100	500 x 900 x 730	60
Club Pro L33	33,0	46-66	2200	100	500 x 900 x 730	60



Xenio Combi CX110CXW WIFI control unit



C105S Logix control unit



C400VKK control unit



Xenio CX170XW WIFI control unit



LTY17 additional power unit





## Modulo

Harvia Modulo has been designed to tolerate and provide fantastic heat and steam. The sleek design and open stone surface of Modulo create an impressive sight. Modulo is a trailblazer product by the world's largest sauna heater manufacturer and a modern sauna decorator's choice.

Harvia Modulo heaters are easy to install. The heating elements are separated from the stones, which results in a long heating element life span. Replacing a heating element is a quick and easy task, as you can just pull out the entire heating element module. Other maintenance measures were also taken into account in the heaters' design from the very start.

All heaters can be equipped with a safety railing and a protective glass sheath. A protective glass sheath is not only stylish but also prevents water from splashing around the heater.

The sauna heater is controlled via a separate control unit.



MODULO

Heater model	Power kW	Recommended sauna room size min.-max. m <sup>3</sup>	Sauna room height min. mm	Stone capacity max. kg	Dimensions width x depth x height	Weight kg
Modulo MD135G / MDS135G	13,6	11-20	2100	160	550 x 550 x 805	47
Modulo MD160G / MDS160G	15,8	15-25	2100	160	550 x 550 x 805	47
Modulo MD180G / MDS180G	18	20-28	2100	160	550 x 550 x 805	47

### OPTIONS



Safety railing HMD1



Protective glass wall HMD3

### RECOMMENDED PRODUCTS



Xenio CX170XW  
WIFI  
control unit



C170VKK  
control unit



C400VKK  
control unit







## Qube

The stone space of the stylish Qube Pro sauna heater is surrounded by brushed steel, and the bottom is graphite black. Qube Pro's appearance allows you to place it any way you wish in your sauna – all of the heater's sides can be left visible. The design of the elegant outer surface utilises triple-wall technology, which keeps the temperature of the heater's outer wall as low as any domestic appliance even while the heater is on. The long-lasting Qube Pro is designed for professional use and will keep its clean appearance even in heavy-duty use. The bottom plate of the heater collects all stone chips that fall down from the stone space, keeping the sauna room clean and elegant at all times. Comfort of use: The innovative design solutions also improve the comfort of use. The Qube Pro heaters are simple to maintain, because their stone space has been separated from the heating elements. The separate stone space allows for the heating elements to be maintained without the need to replace the stones. The structure also protects the heating elements from excess water and the weight of the stones, thereby extending the heating elements' lifespan. A detachable junction box makes the installation and maintenance of the heater quick and easy.



**QUBE 240**



**QUBE 360**

Heater model	Power kW	Recommended sauna room size min.-max. m <sup>3</sup>	Sauna room height min. mm	Stone capacity max. kg	Dimensions width x depth x height	Weight kg
QUBE-240	24	20-40	2300	70	920 x 725 x 500	59
QUBE-360	30/33/36	40-75	2300	90	920 x 980 x 500	59

### OPTIONS



Safety railing  
Qube-L3 + Qube-L4



Safety railing  
Qube-W3 + Qube-W4

### RECOMMENDED PRODUCTS



C400VKK  
control unit



  
Sauna at your fingertips

## HARVIA CONTROL UNITS

Harvia control units make sauna baths – and especially preparing them – very relaxing. Harvia's versatile selection of control units is sure to offer something for your needs, from reliable, manually operated one-heater basic units to new-generation digital units that control all the electric functions of your sauna – down to ventilation and lighting. Of course, this also includes perfect temperature adjustments – with one-degree accuracy – for you or a larger group of bathers, exactly when you want it.

### Easy upgrading of your sauna with a control unit

Versatile use and connection to the building automation allows for use in many kinds of situations, such as remote use, and separate safety equipment, including door switches and additional safety equipment for the sauna heater. In the future, you will be able to replace just the heater, without replacing your control unit. An option for the control unit should be considered in the planning stage (cabling), as this will allow installation and use of a control unit at a later time.

### MyHarvia mobile app

The MyHarvia mobile app allows safe and easy remote control of your sauna's functions. For many device types, you can use the app to control the sauna heater, lighting, ventilation, and steamer. The MyHarvia mobile app is compatible with Xenio WiFi control units, and it can be downloaded for free from Google Play and the Apple App Store.



## Xenio

The Harvia Xenio control unit provides a modern and subtly stylish interface for controlling the heart of the sauna, be it a traditional electric heater, Combi heater with a steamer or infrared radiator. The compact yet clear touch control panel can be surface-mounted in almost any space – sauna, washroom, dressing room or even the living room. The control panel shows you when the sauna is at the right temperature for bathing.

In combination with the MyHarvia mobile app, the Harvia Xenio WiFi control unit brings your sauna's functions to your fingertips. The MyHarvia app provides a safe and easy way of remotely controlling devices connected to the Xenio WiFi control unit, such as the sauna heater, lighting, ventilation, and steamer. You can download the MyHarvia mobile app free of charge from Google Play or the Apple App Store.



## C series

The control units of Harvia C series are manually used and reliable basic control units that allow you to easily control the temperature and the heater's on-time from 1 to 12 hours, depending on the needs of the sauna-goers. The control units can be used to control the heater of both family saunas and public saunas (2.3–17 kW). Reliable Harvia quality. The delivery includes a separate temperature sensor with a 4-metre cable.



## Senlog

Harvia Senlog is a simply stylish control unit. Senlog offers an easy interface for controlling the heart of a sauna, the sauna heater. You can install the control panel in any dry space. With the Senlog control unit, you can control not only the heater but also the lighting and ventilation in the sauna room.



## C170VKK

The Harvia C170VKK control unit with a week timer makes using the heater and the entire sauna very convenient. The new model is easy to install when replacing the old C150VKK – you have the use of old familiar features and functional new features in one. Designed for communal saunas, such as saunas in housing companies, spas and swimming halls. The control unit contains versatile week timer control and remote start features. The easy-to-use touchscreen allows you to control all the necessary functions, such as the electric sauna heater, lighting, ventilation, electronic locks and the safety device connection.










## C400VKK

Harvia C400VKK is an electric-sauna-heater control unit for professional use. With its week timer, remote starting, and a wide range of functions, it enables versatile use of the sauna premises. The unit is suitable for max. 40 kW heaters. Installation is easy. Harvia C400VKK is a redesigned version of the C260 control unit that is considered a classic among professionals. In addition to the electric heater, the control unit can be used to control lighting, electric locks, and ventilation.





FEATURES	Separate control + power unit				
	Xenio CX170	Xenio CX170XW WIFI	Xenio CX110	Xenio Combi CX110C	Xenio Combi CX110CXW WIFI
					
Maximum control power	17 kW 3N- 400 V	17 kW 3N- 400 V	11 kW 3N- 400 V	11 kW 3N- 400 V	11 kW 3N- 400 V
Electric heater control	X	X	X	X	X
Combi heater control				X	X
Infrared sauna control					
Lighting control	X	X	X	X	X
Color lights control					
Operation time adjustment range	1-6 h / 0-12 h	1-6 h / 0-12 h	1-6 h / 0-12 h	1-6 h / 0-12 h	1-6 h / 0-12 h
Temperature setting	X	X	X	X	X
Preselection timer	0-12 h	0-12 h	0-12 h	0-12 h	0-12 h
Air humidity setting				X	X
Evaporator control				X	X
Ventilator control	X	X		X	X
Settings memory in case of power outage	X	X	X	X	X
Screen	Digital	Digital	Digital	Digital	Digital
Fault diagnosis	X	X	X	X	X
Digital thermometer	X	X	X	X	X
Remote switch-on /WiFi	on / off	WiFi & on / off		on / off	WiFi & on / off
Weekly timer		X			
Door switch control	X	X		X	X
Safety switch control	X	X		X	X
Child lock	X	X		X	X
Additional power unit	LTY17	LTY17		LTY17C	LTY17C
Temperature sensor	X	X	X	X	X
Humidity sensor				X	X
Dual sensor system (temperature can be measured with multiple sensors)	X	X		X	X

	Control and power unit combined					
Xenio Infra CX36I	C150	C170VKK	C400VKK	C105S Logix	SENLOG CF9	SENLOG Combi CF9C
						
3,6 kW 1N- 230 V	17 kW 3N- 400 V	17 kW 3N- 400 V	max. 40 kW 2x (400 V 3N-)	Max. 10,5 kW (K15GS, max. 15,5 kW) 400 V 3N-	9 kW	9 kW
	X	X	X	X	X	X
				X		X
X						
X	X	X	X	X	X	X
1-12 h	1-12 h	1-6 h / 0-12 h	1-6 h / 0-12 h	0-12 h	6 h	6 h
X	X	X	X	X	X	X
	0-12 h			0-12 h		
				X		X
				X		X
		X	X	X		
X		X	X			
Digital	Digital	Digital	Digital	Digital	Analog	Analog
X	X	X	X	X	X	X
X	X	X	X	X		
		on / off	on / off			
		X	X			
		X	X			
		X	X			
		X	X			
LX3620IL		LTY17	LTY17	LTY17 / LTY17C		
X	X	X	X	X	X	X
		X	X			



## HEATER OPTIONS

*Add the finishing touch to your sauna experience with Harvia's versatile accessories and solutions that perfect your sauna.*

### Embedding flanges for heaters

This stylish stainless-steel embedding flange provides protection against thermal radiation and enables a shallower bench embedding. In addition to providing protection against thermal radiation, the illuminated embedding flange functions as an interior element that beautifully accentuates the heater.



### Illuminated embedding flange

The stainless-steel embedding flange also provides protection against thermal radiation. Thanks to the embedding flange, the opening in the bench can be smaller, giving a more compact result. The upward-facing LEDs accentuate the rugged surfaces of the stones and make the heater look even more impressive.





## Safety railing

Harvia's safety railings make your sauna safer. Harvia offers safety railings for several of its heater models, with or without lighting. The LED strip on the illuminated safety railing accentuates the heater beautifully.



## Protective illuminated glass sheath for wall-mounted sauna heaters

Harvia's protective glass sheath (HSW5L /HSW5) is a recommended way to increase the safety of sauna bathers around a wall-mounted sauna heater. Made of opti white glass, this beautiful and airy-looking protective sheath completes your sauna interior. The protective glass sheath is tempered, making it safe to use. The protective sheath reflects soft LED light beautifully and completes the ambience of your sauna interior. The protective glass is also available without illumination.



## Embedding flange for wall-mounted heaters

Harvia's embedding flange for wall-mounted heaters HSW1 is a perfect match for heaters such as The Wall E and EE when embedded into a sauna bench. This stainless steel embedding flange also provides protection from heat radiation. The installation hole is only slightly larger than the heater, making the integration look unified.



## Autodose sauna water dispenser

Forget the bucket and ladle, here comes an automated water dispenser. Just relax and press a button to apply water onto the stones – with or without a fragrance. Spa saunas benefit from the even air humidity and the simplified approach to throwing sauna water.

The device consists of a main unit and operating buttons. The delivery includes one button for water and another button for a water-fragrance mixture. The device works either automatically at defined intervals or at the press of a button. When the device is in automatic mode and water is applied by pushing the button, the timer for the dosing interval restarts.

## Design piping for the Autodose automated water dispenser

The stylish and modern Autodose design heater water piping is installed above the sauna heater. An unobtrusive special nozzle will direct the water on a large area, providing a fantastic sauna bath.

The simple design of the piping is well-suited to many different sauna interiors. The piping can also be integrated through the sauna's wall panel, thus hiding the piping and maintaining a clearer sauna interior.

The design piping is suited to heaters of different sizes and its distance can be adjusted based on the size of the heater. The design piping is compatible with the Harvia Autodose automated water dispenser, but it can also be used without (requires separate water control).





Ensure safe heat

## SAFETY EQUIPMENT AND SAFETY SWITCHES

The sauna experience improves considerably when you feel safe. It is much easier to relax when you do not have to be careful when moving about the sauna. The significance of safety is highlighted in families with children in particular, and it is usually among the most important factors when it comes to saunas. Young children can enjoy the heat of the sauna as much as adults do, but they rarely have the patience to keep still for a long time, which may lead to dangerous situations taking you by surprise. Safety is also a very important part of the sauna for elderly sauna bathers.

### Avoid accidents by making the right choices

Safety is an essential and important part of the sauna experience. In fact, Harvia offers a comprehensive selection of different kinds of solutions to improve safety. These include:

A sauna heater **safety railing** is a wooden railing installed around a sauna heater for the simple purpose of preventing sauna bathers from touching the heater. The safety railing provides the sauna with an impressive look in addition to safety, which is why we recommend that one be installed in every sauna. Anyone can lose their balance when standing up from the bench after a sauna session.

The **protective sheath** of a sauna heater is attached directly to the side of the heater. The sheath conforms to the shape of the heater and creates a smoother whole. A protective sheath reduces safety distances, allowing the heater to be installed nearer to the sauna's wall or benches in a fire safe manner. Depending on the heater model, one or two protective sheaths can be attached.





The **door sensor system** is easy to connect to the control unit, ensuring the safe remote use of the sauna in accordance with EU standards. The door sensors guarantee that the sauna room is safe before the electric heater is turned on. The system is installed discreetly onto the sauna door.

The **safety switch** is installed above the sauna heater. The switch always monitors the heater's operation when the heater is turned on. It switches the power off immediately if anything falls on the safety device and stops the sauna heater from switching on.

A sauna heater **control unit** is another good way to affect safety. With the placement of a separate control unit, digital control panel or wireless Spot control switch, you can ensure that children cannot switch the heater on by accident, for example. Harvia's product range also includes child-proof versions of traditional heater models, equipped with fixed operating switches.

## Safety equipment completes the design – create an atmosphere with lighting

Sauna design and safety do not exclude each other. At their best, they support each other. The clear and sleek design of the safety equipment is a perfect fit with current sauna trends.

You can boost the ambience and impressive look of your sauna further by choosing an illuminated safety railing or by equipping the built-in safety railing in your bench solution with a LED light strip.







## SAUNA ACCESSORIES

*Harvia sauna accessories complete your sauna decor and contribute to the ultimate sauna experience. Our extensive product range covers everything from high-quality sauna heater stones to water buckets, thermometers, hygrometers and fragrances.*



### Legend sauna accessories

The Legend sauna accessory selection includes a ladle, water bucket, thermometer, firewood rack and clothes hanger. The ladle, water bucket and firewood rack have wooden handles made of wood that does not get too hot in the heat of the sauna. The thermometer and clothes hanger are made out of heat-treated aspen and finished with black steel details. You can see the spirit of craftsmanship in all Legend sauna accessories.

### Sauna accessories set

The Harvia sauna accessories set includes a stainless steel bucket and ladle and an easy-to-read thermo/hygrometer. The Harvia sauna accessories set goes with your sauna like water goes with the sauna stones – and puts a finishing touch on your stylish interior design scheme. Stainless steel withstands changes in humidity and temperature remarkably well, making it a long-lasting material for heavy-duty use. The handles are made of non-heating wood that is pleasant to take a hold of. The Harvia sauna set is also a great idea for a high-quality gift.

## Bucket

The Harvia wooden buckets (4/7 l) and pail are high-quality work. The plastic inner part gives the product a longer life and makes cleaning easy.

## Sauna ladle

A wooden sauna ladle can be treated with products suitable for the wood surfaces in the sauna, if desired. Ladle length: 36 / 48 cm. There is a loop at the end of the ladle for hanging the product. Allow the ladle to dry after every sauna bath.

## Click water bucket and ladle

The clear design of the Harvia Click set of accessories suits also a modern sauna. The stylish black is paired beautifully with both matt and glossy surface details. The set includes a water bucket and ladle, made in Finland using recycled plastic. The ergonomic handle of the Harvia Click products is comfortable to hold on to. The sauna ladle can also be placed on top of the pail's handle for convenient storage. Made of plastic, it is light to handle and carry.

## Set of black water bucket and ladle

The beautifully designed Harvia water bucket and ladle will complete your modern sauna interior. The water bucket volume is 4 liters.

## Sauna fragrances

Harvia's fragrances create just the kind of atmosphere you want for the occasion. Maybe fresh peppermint or eucalyptus to clear the airways? Or would you like to create the atmosphere of a summer sauna at your cottage? If so, go for Finnish Midsummer birch, traditional tar or soothingly intoxicating pine forest.

## Stool

The stool is made out of alder. You can use products intended for the wood materials in the sauna to treat the stool.

## Sauna Care Set

By caring for your wood surfaces regularly you can extend the lifespan of your sauna. The Harvia Sauna Care Set is designed for treating the wood surfaces of the sauna and cleaning the sauna facilities. The set includes one bottle of cleanser for the sauna, paraffin oil, a sponge, protective gloves and sandpaper.

## Harvia by Luhta textiles

Harvia by Luhta sauna textiles are made of high-quality waffle linen cotton that feels pleasant on the skin and gives the towels a modern, natural look. The textiles have excellent absorption capacity and dry up quickly after use. The simply stylish and timeless design completes your sauna experience, and it is nice to wrap a large towel around yourself after a relaxing sauna session.







## Harvia sauna heater stones

Sauna heater stones are a key part of the sauna experience, but many people do not spare them any thought. The proper quality, size and placement of the stones have a considerable effect on heat retention and steam creation. Harvia sauna heater stones suit all sauna heaters. The high quality of Harvia stones is guaranteed by continuous quality assurance carried out in partnership with the Geological Survey of Finland. Harvia's sauna stones are always safe, clean and ready to use.

The rock material used for sauna heater stones is quarried and monitored carefully to meet the specific quality requirements. This ensures that the stones are safe to use at high temperatures and will not release any emissions. Harvia sauna heater stones are known to remain safe at extreme temperatures, also retaining heat very well to create maximum efficiency.

The sauna stones have been carefully picked and washed, so they are always of the highest quality, and are easy to change. In accordance with sustainability principles, any stones that do not meet the quality requirements will be used for construction and other industries.

### **Annual change of sauna stones:**

- extends the service life of the heater
- saves energy
- keeps the sauna clean
- guarantees the best sauna experience





## Sauna heater stones

---

### Olivine diabase – traditional sauna heater stone

Durable in structure and high in specific gravity, olivine diabase retains and dissipates heat well, offering an excellent steam bath.

AC3000 Ø 5–10 cm, 20 kg/box

AC3020 Ø 10–15 cm, 20 kg/box

### Elite Pro Heavy Duty

Elite Pro Heavy Duty sauna heater stones are made from the finest Finnish olivine diabase and heat-treated at approximately 1,000 °C, resulting in a long service life and making them an excellent choice for frequently heated public saunas.

AC3050 Ø 5–10 cm, 20 kg/box

AC3055 Ø 10–15 cm, 20 kg/box

### Black vulcanite

These dark sauna heater stones are made of fine-grained, dark grey volcanic rock. When wet, they turn black, adding a unique touch to the look of the sauna.

AC3040 Ø 5–10 cm, 20 kg/box

AC3045 Ø 10–15 cm, 20 kg/box

### Rounded sauna heater stones

The rounded olivine diabase sauna heater stones resemble round natural stones that can be found for example in larger rapids, adding an impressive finish to the surface layer of the sauna heater. If you have a heater with a small stone space, whether it is an electric heater or woodburning stove, we recommend round stones on top of split-face stones, as this increases the evaporation surface lower down in the stone space. This prevents the water from flowing directly past the stone space. This combination enables a pleasant steam and efficient heat generation.

R-991 Ø 5–10 cm, 15 kg/box

R-995 Ø 10–15 cm, 20 kg/box

## Decorative stones

---

### Red Granite decorative stone for atmosphere

Red granite is an impressive decorative stone that ensures a soft steam bath and a warm atmosphere in the sauna.

AC5000Ø 5–10 cm, 10 kg/box

### White decorative stones to crown the sauna heater

White decorative stones ensure a soft steam bath and add a fresh and clean touch to the sauna.

AC4000 Ø 5–10 cm, 10 kg/box



# TECHNICAL DATA

Heater model	Power kW	Recommended sauna room size min.–max. m <sup>3</sup>	Sauna room height min. mm	Stone capacity max. kg	Dimensions width x depth x height
Delta D23	2,3	1,3–2,5	1700	11	340 x 200 x 635
Delta D36	3,6	2–4,5	1700	11	340 x 200 x 635
Delta D23XE	2,3	1,3–2,5	1700	11	340 x 200 x 635
Delta D36XE	3,6	2–4,5	1700	11	340 x 200 x 635
Delta Combi 29SE	2,9	1,5–4	1700	11	340 x 200 x 635
Vega Compact BC23	2,3	1,3–2,5	1700	12	365 x 295 x 505
Vega Compact BC35	3,5	2–4,5	1700	12	365 x 295 x 505
Vega BC45	4,5	3–6	1900	20	480 x 310 x 540
Vega BC60	6,0	5–8	1900	20	480 x 310 x 540
Vega BC80	8,0	7–12	1900	20	480 x 310 x 540
The Wall SW45 / The Wall WSW45E	4,5	3–6	1900	20	430 x 260 x 610
The Wall SW60 / The Wall E SW60E	6,0	5–8	1900	20	430 x 260 x 610
The Wall SW80	8,0	7–12	1900	20	430 x 260 x 700
The Wall SW90 / The Wall SW90E	9,0	8–14	1900	20	430 x 260 x 700
The Wall Combi SW45S / SW45SA	4,5	5–10	1900	20	380 x 355 x 710
The Wall Combi SW70S / SW70SA	7,0	8–14	1900	20	380 x 355 x 710
The Wall Combi SW90S / SW90SA	9,0	9–18	1900	20	380 x 355 x 710
KIP45	4,5	3–6	1900	25	410 x 280 x 600
KIP60	6,0	5–8	1900	25	410 x 280 x 600
KIP80	8,0	7–12	1900	25	410 x 280 x 600
Top Steel M45 / M45E	4,5	3–6	1900	20	410 x 290 x 650
Top Steel M60 / M60E	6,0	5–8	1900	20	410 x 290 x 650
Top Steel M80 / 80E	8,0	7–12	1900	20	410 x 290 x 650
Top Steel M90E	9,0	8–14	1900	20	410 x 310 x 580
Moderna V45XE	4,5	3–6	1900	20	410 x 310 x 580
Moderna V60XE	6,0	5–8	1900	20	410 x 310 x 580
Moderna V80XE	8,0	7–12	1900	20	410 x 310 x 580
Combinator KM60SE	6,0	5–8	1900	25	400 x 330 x 645
Combinator KM80SE	8,0	7–12	1900	25	400 x 330 x 645
Topclass Combi KV60SE	6,0	5–8	1900	20	400 x 360 x 640
Topclass Combi KV80SE	8,0	7–12	1900	20	400 x 360 x 640
Topclass Combi KV90SE	9,0	8–14	1900	20	400 x 360 x 640
Sauna steamer SS20	2,0				340 x 95 x 680
Sauna steamer SS20A	2,0				340 x 95 x 680

Weight kg	Safety distances to burning materials (mm)					Safety railing model	Protective sheath model	Embedding flange model	Safety switch model
	sides	front	back	ceiling	floor				
8	10	10	0	900	150				
8	10	10	0	900	150				
8	10	10	0	900	150				
8	10	10	0	900	150				
8	10	10	0	900	150				
7	20	10	0	900	80				
7	30	10	0	900	80				
11	35	20	0	1100	200				SFE-220400
11	50	30	0	1100	200				SFE-220400
11	100	30	0	1100	200				SFE-220400
11	35	20	0	1200	80		HSW5/HSW5L	HSW1	SFE-220400
12	40	40	0	1200	80		HSW5/HSW5L	HSW1	SFE-220400
14	70	30	0	1200	80		HSW5/HSW5L	HSW1	SFE-220400
15/11	80	30	0	1200	80		HSW5/HSW5L	HSW1	SFE-220400
16,0	35	20	0	1200	80		HSW5/HSW5L	HSW1	SFE-220400
16,8	70	20	0	1200	80		HSW5/HSW5L	HSW1	SFE-220400
16,8	80	20	0	1200	80		HSW5/HSW5L	HSW1	SFE-220400
16	35	20	0	1100	150				
16	50	30	0	1100	150				SFE-220400
16	100	30	0	1100	150				SFE-220400
16	35	20	0	1100	150				
16	50	30	0	1100	150				
16	100	30	0	1100	150				
15	120	40	0	1100	150				
15	35	20	0	1100	150				SFE-220400
15	40	30	0	1100	150				SFE-220400
15	70	30	0	1100	150				SFE-220400
16	50	10	0	1100	150				
16	100	10	0	1100	150				
16	50	60	50	1100	0				
16	100	90	100	1100	0				SFE-350400
16	120	100	120	1100	0				SFE-350400
6									
6									



Heater model	Power kW	Recommended sauna room size min.-max. m <sup>3</sup>	Sauna room height min. mm	Stone capacity max. kg	Dimensions width x depth x height
Hidden heater HH6	6,0	6-10	2100	15	1175 x 290 x 830
Hidden heater HH9	9,0	10-14	2100	15	1175 x 290 x 830
Hidden heater HH12	12,0	12-17	2100	15	1175 x 290 x 830
Globe GL70E	6,9	6-10	1900	50	430 x 430 x 875
Globe GL110E	10,5	9-15	1900	80	500 x 500 x 955
Legend XE PO70XE	6,8	6-10	1900	100	1080 x 325 x 325
Legend XW PO70XW WiFi	6,8	6-10	1900	100	1080 x 325 x 325
Legend E PO70E	6,8	6-10	1900	100	1080 x 325 x 325
Legend XE PO110XE	11	9-18	1900	100	1080 x 325 x 325
Legend XW PO110XW WiFi	11	9-18	1900	100	1080 x 325 x 325
Legend E PO110E	11	9-18	1900	100	1080 x 325 x 325
Legend Pro PO11	11	9-20	1900	120	530 x 530 x 740
Legend Pro PO165	16,5	16-35	2100	220	600 x 600 x 830
Glow TRT70 / TRT70E / TRT70XE	6,8	6-10	1900	80	364 x 364 x 1076
Glow TRT90 / TRT90E / TRT90XE	9,0	8-14	1900	90	364 x 364 x 1076
Glow corner TRC70 / TRC70E / TRC70XE	6,8	6-10	1900	50	330 x 330 x 1100
Glow corner TRC90 / TRC90E / TRC90XE	9,0	8-14	1900	50	330 x 330 x 1100
Cilindro Spot PP70SP	6,8	6-10	1900	90	310 x 310 x 1020
Cilindro Spot PP90SP	9,0	8-14	1900	90	310 x 310 x 1020
Cilindro PC 66 / PC66E	6,6	5-9	1900	75	255 x 255 x 1340
Cilindro PC70 / PC70E / PC70XE / PC70 XW	6,8	6-10	1900	80	320 x 320 x 930
Cilindro PC90/ PC90E / PC90XE / PC90XW	9,0	8-14	1900	80	320 x 320 x 930
Cilindro PC110XE	10,8	9-18	1900	120	365 x 365 x 1070
Cilindro Pro PC100E/135E	10	9-16	1900	140	355 x 355 x 1300
Cilindro Pro PC100E/PC135E	13,2	10-20	1900	140	355 x 355 x 1300
Cilindro Pro PC165E/PC200E	16,6	15-25	2100	220	450 x 450 x 1300
Cilindro Pro PC165E/PC200E	19,8	20-30	2100	220	450 x 450 x 1300
Virta HL70 / HLS70	6,8	5-10	1900	50	415 x 340 x 810
Virta HL90 / HLS90	9,0	8-14	1900	50	415 x 340 x 810
Virta HL110/HLS110	10,8	9-18	1900	70	415 x 410 x 810
Virta Combi HL70S / HL70SA	6,8	5-10	1900	50	415 x 410 x 810
Virta Combi HL90S / HL90SA	9,0	8-14	1900	50	415 x 410 x 810
Virta Combi HL110S / HL110SA	10,8	9-18	1900	70	415 x 485 x 810
Virta Pro HL135	13,5	11-20	2100	100	780 x 340 x 810

Weight kg	Safety distances to burning materials (mm)					Safety railing model	Protective sheath model	Embedding flange model	Safety switch model
	sides	front	back	ceiling	floor				
33	80	75	0	1070	0				
33	80	90	0	1070	0				
33	100	120	0	1070	0				
16	50	50	50	900	20	HGL7		HPC2/HPC2L	
19	50	50	50	900	20	HGL7		HPC2/HPC2L	
18,5	100	100	100	840	50 (1N-) 30 (3N-)	HPO3/HPO3L	HPO11	HPO2	SFE-D350
18,5	100	100	100	840	50 (1N-) 30 (3N-)	HPO3/HPO3L	HPO11	HPO2	SFE-D350
18,5	100	100	100	840	50 (1N-) 30 (3N-)	HPO3/HPO3L	HPO11	HPO2	SFE-D350
18,5	100	100	100	840	50 (1N-) 30 (3N-)	HPO3/HPO3L	HPO11	HPO2	SFE-D350
18,5	100	100	100	840	50 (1N-) 30 (3N-)	HPO3/HPO3L	HPO11	HPO2	SFE-D350
18,5	100	100	100	840	50 (1N-) 30 (3N-)	HPO3/HPO3L	HPO11	HPO2	SFE-D350
30	100	100	100	1100	0	SASPO240/ SASPO240L			SFE-D530
33	100	100	100	1250	0	SASPO241/ SASPO241L			SFE-D530
14	100	100	100	850	50	HTRT3		HPC2/HPC2L	SFE-D350
14	100	100	100	850	50	HTRT3		HPC2/HPC2L	SFE-D350
16,3	0	100	0	800	20	HTRC3/HTRC3L		HTRC1	
19,7	0	100	0	800	20				
11,5	100	100	100	880	20	HPP3/HPP3L	HPP11	HPC2/HPC2L	SFE-D350
12,2	100	100	100	880	20	HPP3/HPP3L	HPP11	HPC2/HPC2L	SFE-D350
11	100	100	30	540	50	HPC10/HPC10L			SFE-D350
10	100	100	100	950	50	HPC3/HPC3L	HPC11M	HPC2/HPC2L/ HPC1/HPC1M	SFE-D350
10	100	100	100	950	50	HPC3/HPC3L	HPC11M	HPC2/HPC2L/ HPC1/HPC1M	SFE-D350
13	100	100	100	830	30	HPC4/HPC4L		HPC2/HPC2L/ HPC1/HPC1M	SFE-D350
18	100	100	100	950	50	HPC6	HPC5	HPC7	SFE-D450
18	100	100	100	950	50	HPC6	HPC5	HPC7	SFE-D450
25	100	100	100	750	0			HPC7	SFE-D450
25	100	100	100	750	0			HPC7	SFE-D450
21	30	30	30	1100	0	HL1, HL2			SFE-350400
21	30	30	30	1100	0	HL1, HL2			SFE-350400
24	30	30	30	1100	0	HL1, HL3			SFE-350400
27	30	30	30	1100	0	HL1, HL3			SFE-350400
27	30	30	30	1100	0	HL1, HL3			SFE-350400
29	30	30	30	1100	0	HL1, HL4			SFE-350400
41	50	50	50	1290	0	HL2, HL5			2 x SFE-350400

Heater model	Power kW	Recommended sauna room size min.-max. m <sup>3</sup>	Sauna room height min. mm	Stone capacity max. kg	Dimensions width x depth x height
Virta Pro HL160	15,8	16-25	2100	100	780 x 340 x 810
Virta Pro HL220	21,6	22-32	2100	140	780 x 410 x 810
Virta Pro Combi HL135SA	13,5	11-20	2100	100	780 x 410 x 810
Virta Pro Combi HL160SA	15,8	16-25	2100	100	780 x 410 x 810
Virta Pro Combi HL220SA	21,6	22-32	2100	140	780 x 485 x 810
Forte AFB4	4,0	5-8	1900	100	500 x 535 x 830
Forte AFB6	6,0	7-12	1900	100	500 x 535 x 830
Forte AFB9	9,0	10-15	1900	100	500 x 535 x 830
Senator T9	9,0	8-14	1900	40	465 x 345 x 660
Senator T10,5	10,5	9-15	1900	40	465 x 345 x 660
Senator Combi T7C / T7CA	7,0	6-9	1900	35	345 x 465 x 660
Senator Combi T9C / T9CA	9,0	8-14	1900	35	345 x 465 x 660
Club K11G	11,0	9-16	1900	60	505 x 430 x 700
Club K13,5G	13,5	11-20	2100	60	505 x 430 x 700
Club K15	15,0	14-24	2100	60	505 x 430 x 700
Club Combi K11GS	11,0	9-16	1900	60	505 x 490 x 700
Club Combi K13,5GS	13,5	11-20	2100	60	505 x 490 x 700
Club Combi K15GS	15,0	14-24	2100	60	505 x 490 x 700
Club Pro L20	20,0	18-30	2100	100	500 x 900 x 730
Club Pro L26	26,0	30-46	2200	100	500 x 900 x 730
Club Pro L30	30,0	40-56	2200	100	500 x 900 x 730
Club Pro L33	33,0	46-66	2200	100	500 x 900 x 730
Modulo MD135G / MDS135G	13,6	11-20	2100	160	550 x 550 x 805
Modulo MD160G / MDS160G	15,8	15-25	2100	160	550 x 550 x 805
Modulo MD180G / MDS180G	18	20-28	2100	160	550 x 550 x 805
QUBE-240	24	20-40	2300	70	920 x 725 x 500
QUBE-360	30/33/36	40-75	2300	90	920 x 980 x 500



Weight kg	Safety distances to burning materials (mm)					Safety railing model	Protective sheath model	Embedding flange model	Safety switch model
	sides	front	back	ceiling	floor				
41	80	80	80	1290	0	HL2, HL5			2 x SFE-350400
47	80	80	80	1290	0	HL3, HL5			SFE-500500
53	50	50	50	1290	0	HL2, HL5			2 x SFE-350400
53	80	0	80	1290	0	HL2, HL5			2 x SFE-350400
57	80	0	80	1290	0	HL4, HL5			SFE-500500
30	20	20	30	1000	0			HAF1	
30	20	20	30	1000	0			HAF1	
30	20	20	30	1000	0			HAF1	
19	50	50	150	1250	0				SFE-500500
19	50	50	180	1400	0				SFE-500500
20	60	60	80	1250	0				SFE-500500
20	80	80	120	1250	0				SFE-500500
25	50	50	70	1200	0				SFE-500500
25	50	50	100	1400	0				SFE-500500
25	50	50	100	1400	0				SFE-500500
30	50	50	70	1200	0				SFE-500500
30	50	50	100	1400	0				SFE-500500
30	50	50	100	1400	0				SFE-500500
60	100	100	160	1400	0				SFE-500500
60	100	100	160	1500	0				SFE-500500
60	100	100	200	1500	0				SFE-500500
60	100	100	200	1500	0				SFE-500500
47	100	100	100	1200	0				SFE-500500
47	100	100	100	1200	0				SFE-500500
47	120	120	120	1200	0				SFE-500500
59	100	100	100	1380	0	Qube-L3/Qube-L4			
59	150	150	150	1380	0				

**Inspirational wellness  
experiences & equipment**

**YOUR AUTHORISED  
DEALER AND INSTALLER  
FOR THE UK**

**+44 (0)1428 713 185**  
**[sales@leisurequip.com](mailto:sales@leisurequip.com)**